

## SCIF SOP for BSL-2 samples on LSR2

### EH&S Requirements:

Through UC Merced EH&S the user must complete the following trainings in addition to general lab safety training:

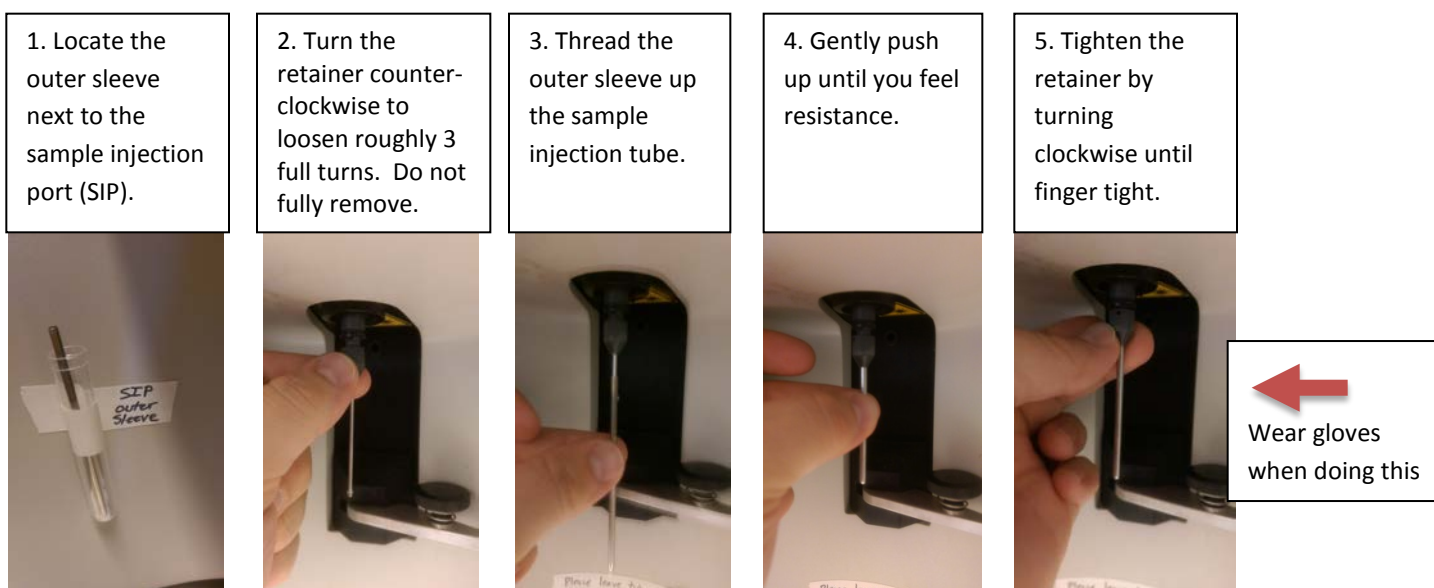
- Biosafety
- Bloodborne pathogen
- Flow users running BSL-2 samples must submit a copy of their Biological Use Authorization (BUA) to SCIF prior to running samples

### PPE (Personal Protective Equipment):

- When running BSL-2 samples on the LSR2 all room occupants must wear a barrier lab coat, gloves, and safety glasses. For sorting of BSL-2 samples on the Aria3, additional precautions apply. Please see BSL2 sorting SOP for additional details.

### Instrument Usage:

- For BSL2 samples the SIP outer sleeve must be installed. The cytometer should be off or in “standby” mode.



- Install a tube of diH<sub>2</sub>O and ensure it is fully loading without contacting the bottom of the outer sleeve. Run the tube briefly.
- With the cytometer on “run” confirm there is no drip-back coming from the SIP when the arm is open.
- The cytometer is now ready to run BSL-2 samples
- At the end of your run extensively wipe the SIP up to the BAL seal (O-ring) with a paper towel soaked with 10% bleach. Repeat the wipedown with diH<sub>2</sub>O. Then follow the standard cleaning procedure in its entirety with the SIP cover on. See the side of the instrument for full cleaning procedure. Use newly made FACS Clean, FACS Rinse, and diH<sub>2</sub>O tubes and when complete dispose of all tubes as biohazardous waste. The SIP outer sleeve can now be removed and placed back in its holder.
- Spray down the instrument surfaces that were touched with gloves and computer table with 10% bleach. Allow bleach to sit for 30 minutes prior to wiping down with diH<sub>2</sub>O.

### Solid waste:

- Empty tubes and other non-sharp items are to be placed in double bagged red biohazard container
- Empty tips and any other sharps are to be placed in the red sharps container

### Liquid waste:

- The waste collection tank must be filled with 1.5L of 100% bleach prior to running the cytometer. Tank should be emptied once it reaches approximately ¾ full. Empty by pouring waste down the sink.
- Any other liquid waste such as unrun sample should be placed in 10% final bleach solution for 30 minutes prior to dumping down the sink.
- No liquid waste should be disposed of in the red biohazard containers or in the trash!